



- **About Us**
- **Our Courses**
- **Our Partners**
- **Our Clients**

CHARLES ISLAND
NASSAU
M&S SERVICES

CONTENT

About us	1
Vision, Mission, Core Values	2
Objectives	3
Organogram	4
Our Courses	
- Maritime Administration	6
Dynamic Positioning	8
BOSIET	10
STCW	12
Security Awareness	13
COC Preparatory Training	14
Ship Construction	16
Our Services	
_ Road Construction	18
_ Tank Farm Construction	19
_ Machine Operator Training	20
Our Policies	
_ Company Policy	22
_ HSE Policy	25
Gallery	27
Our Clients	37
Our Partners	38
Certifications	40
Proposed Site for Maritime Academy	46
Notes	

Our Managing Director



Engr. Rosemary O. Tonlagha is the MD/CEO of Lufredha Maritime Academy - A maritime institute that trains in offshore and onshore courses with certifications for the maritime industry at large.

Engr. Rosemary is a marine engineer with over 7 years of professional experience and is also a Lecturer at the Nigerian Maritime University. Before establishing Lufredha Academy, she was the HOD of Marine Engineering at the Joemarine Institute of Nautical Studies and Research for over 7 years. And is currently an Associate Nautical Scientist.

Engr. Rosemary holds a master's degree in Marine Engineering, a postgraduate degree in Maritime Administration, HND in Marine safety. She is ISO-certified, and OSHA Certified.

She has authored "Boat Drivers Navigation and Safety Manual" and "Dredgers Operators: Training Handbook" and has offered over 200 Certificates to successful trainees.





ABOUT US

Lufredha Academy Limited is a provider of training for professionals in the maritime, offshore oil & gas in Nigeria and is also a provider of engineering services within Nigeria.

As an academy, we liase with local and international partners as well as regulatory bodies to deliver training of the highest standards in our world class state of the art facilities.

As a service provider, we are a civil, mechanical and electrical engineering company and are also general contractors in on-shore and off-shore oil and gas and construction.



VISION

To become the leading service provider and one stop solution in the oil, gas and marine industry, while actively involved in value and job creation.



MISSION

To ensure and improve safety and security of sea farers in local and international waters and to prevent and reduce the level of hazards and mishaps in the maritime industry at large.



CORE VALUES

- Knowledge
- Skill
- Integrity



OBJECTIVES

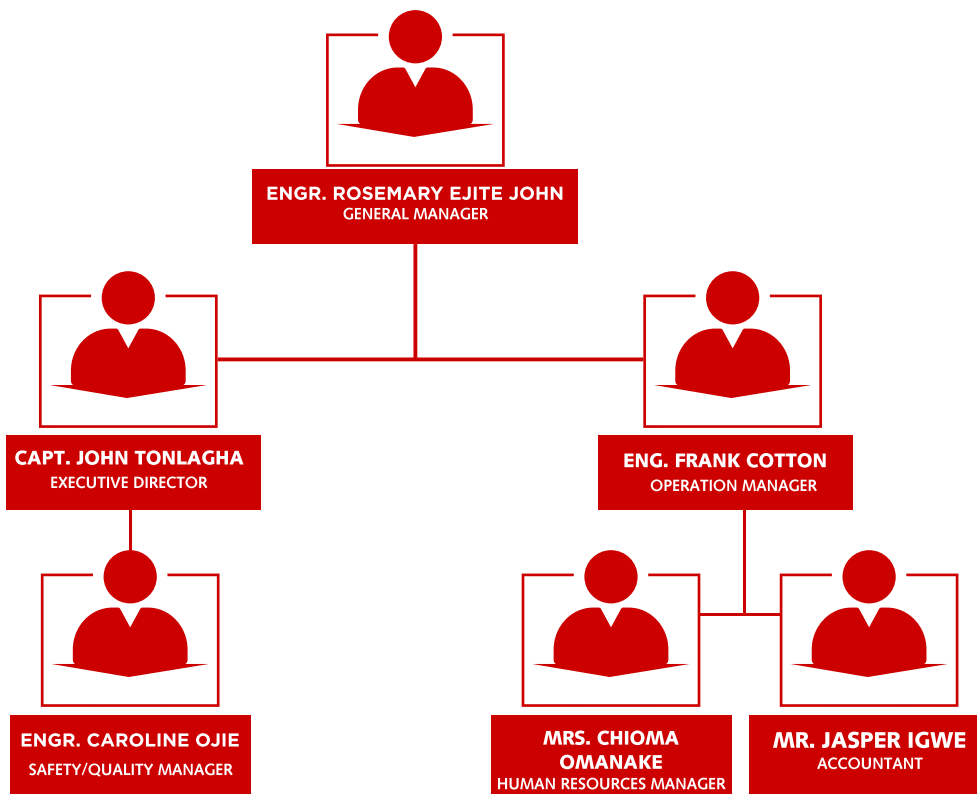
To train competent workers in the maritime industry and oil and gas such as:

- Ratings
- Officers
- Marine Engineers
- Marine Captains
- Maritime Administrative Personels

which are required both on board vessels and small craft.



OUR TEAM





OUR COURSES

- **Maritime Administration**
- **Dynamic Positioning**
- **BOSIET**
(Basic Offshore Safety Induction & Emergency Training)
- **STCW**
(Standards of Training, Certification, and Watchkeeping)
- **Security Awareness**
- **COC Preparatory Training**
- **Ship Construction**



Maritime Administration

Programme Objectives:

To provide prospective Maritime Management learners with a body of knowledge which will:

- Increase and broaden their employment opportunities within the Maritime industries worldwide
- Provide them with a clear understanding of all economic, legal, technical and managerial parameters which apply in the shipping industry
- Enable them to integrate their knowledge gained on the course in analysing and suggesting solutions to shipping management problems
- Provide them with a qualification which will enable them to seek senior managerial positions.

Course Structure:

The Diploma in Maritime Management – Part 1

- Business Of Shipping (The)
- Maritime Operations
- International Trade & Transport - Maritime

- Maritime Economics
- Click a subject below to view in a new tab

(A Diploma in Maritime Management is awarded on completion of all Part 1 subjects.)

The Advanced Diploma in Maritime Management – Part 2

- Maritime Law
- Marine Insurance
- Maritime Security & Safety Management
- Marketing Planning & Decision Making - Maritime
- Click a subject below to view in a new tab

(The Advanced Diploma in Maritime Management is awarded on completion of all Part 1 and Part 2 subjects.)

The Graduate Diploma in Maritime Management – Part 3

- Finance of International Trade
- Shipbroking & Chartering Practices
- Port Operations & Management
- Logistics & Supply Chain Management

(The Graduate Diploma in Maritime Management is awarded on completion of all Part 1, Part 2 and Part 3 subjects.)

(The Graduate Diploma in Maritime Management is awarded on completion of all Part 1, Part 2 and Part 3 subjects.)



Dynamic Positioning

At the end of the course the student should have acquired knowledge of the principles of DP, have acquired a basic understanding of how to set up a DP system, have an understanding of the practical operation of associated equipment, including position reference systems, be able to recognise the various alarm, warning and information messages, be able to relate the DP installation to the ship system, including (but not limited to) power supply, manoeuvring facility, available position reference systems and nature of work, be able to relate DP operations to the existing environmental conditions of wind, sea state, current/tidal stream and vessel movement.

Course Objectives

Clear objectives are set in Nautical Institute's Training Scheme. These objectives can be summarised as follows; By the completion of the training session, the trainee must be able to: DP CONTROL STATION

- Define Dynamic Positioning and use of same.
- Define main components in the DP system and role of same, including advantages and disadvantages in the use of the DP.
- Discuss concept of mathematical model, and consequence analysis.

Course Content

The training is based on the program outlined by the Nautical Institute Scheme of Training and is a mix of theoretical sessions and practical exercises. All training is conducted as classroom training.

Course Outline

Power Generation And Management

Propulsion Units

Position Reference Systems

Sensors (heading, Motion,enviromental And External)

DP Operations

Practical Operation of a DP System



BOSIET

Basic Offshore Safety Induction & Emergency Training

Aim :

The aim of the BOSIET is to introduce delegates to the specific safety issues and regimes relevant to offshore installations, and to equip them with the basic emergency response knowledge and skills for travelling to and from offshore installations by helicopter.

Objectives :

The objectives of the BOSIET are that delegates will be able to:

Identify the generic hazards which are specific to offshore oil and gas installations, potential risks associated with those hazards, and how controls are put in place to eliminate or reduce risks.

Identify key offshore related safety regulations and explain the basic safety management concepts.

Demonstrate that they can use the safety equipment, and follow procedures in preparing for, and during helicopter emergencies with particular focus on escaping from a helicopter following ditching.

Demonstrate sea survival and first aid techniques.

Demonstrate that they can effectively use basic firefighting equipment, and practise self-rescue techniques in low visibility situations, to include

smoke filled areas.

Course Content:

- Offshore Safety Induction.
- Helicopter Underwater Escape Training including EBS
- Fire Fighting and Self Rescue.
- Sea Survival & First Aid

Target Audience:

The BOSIET training programme is designed for personnel new to the offshore oil and gas industry.

Delegate Pre-requisites:

A valid medical certificate of fitness

A valid means of identification(e.g International passport,drivers lincense,voters card etc)

One passport photograph

Training Durations:

The optimum 'contact time' for the BOSIET training programme is 21 hours and 5 minutes.



STCW

Standards of Training, Certification and Watch keeping

The International Convention on Standards of Training, Certification and Watch keeping for Seafarers (or STCW) sets qualification standards for masters, officers and personnel on seagoing ships.

STCW was adopted in 1978 by conference at the International Maritime Organization (IMO) in London, and entered into force in 1984.

The Convention was significantly amended in 1995 and the most significant amendments require seafarers be provided with “familiarization training” and “basic safety training” which includes:

- Basic fire fighting
- Elementary first aid
- Personal survival techniques
- Personal safety and social responsibility
- Crowd management and crowd control
- Crisis management (for ship’s senior officers)

This training is mandatory for all crew members working on cruise ships and is intended to ensure that seafarers are aware of the hazards of working on a vessel and can respond appropriately in case of emergency.

Security Awareness

COURSE OVERVIEW:

This course is intended to provide the knowledge required to enable personnel without designated security duties in connection with a Ship Security Plan (SSP) to enhance ship security in accordance with the requirements of Chapter XI-2 of SOLAS 74 as amended, the ISPS Code, and section A-VI/6-1 of the STCW Code, as amended.

COMPETENCE:

At the end of the training, the attendees should be able to:

- Contribute to the enhancement of maritime security through heightened awareness;
- Recognize security threats; and
- Understand the need for and methods of maintaining security awareness and vigilance.

LEARNING OUTCOME:

Participants upon successful completion of this course should achieve the required standard of competence enabling them to contribute to the enhancement of maritime security through heightened awareness and the ability to recognize security threats and to respond appropriately. This knowledge shall include, but is not limited to:

The meaning and the consequential requirements of the different security levels;

- Knowledge of emergency procedures and contingency plans;
- Recognition and detection of weapons, dangerous substances and devices;
- Recognition, on a non-discriminatory basis, of characteristics and behavioral patterns of persons who are likely to threaten security; and
- Techniques used to circumvent security measures.



COC **Preparatory** **Training**

The certificate of competency (COC) is a form of licence every mariner is granted to work on ships. The certificate ensures that the concerned person has the sufficient knowledge and skills to sail on ocean going vessels.

CoC Courses Offered;

DECK OFFICERS

CoC Class 1 Deck Officer
CoC Class 1 & 2 Deck Officer
CoC Class 3 Deck Officer

MARINE ENGINEER OFFICERS

CoC Class 1 Marine Engineer Officer (Orals)
CoC Class 1 and 2 Marine Engineer Officer (Part B)
CoC Class 1 and 2 Marine Engineer Officer (Part A - Distance Learning Program)
CoC Class 4 (Special Limit) Master and Chief Engineer

smoke filled areas.

Course Content:

Offshore Safety Induction.
Helicopter Underwater Escape Training including EBS
Fire Fighting and Self Rescue.
Sea Survival & First Aid

Target Audience:

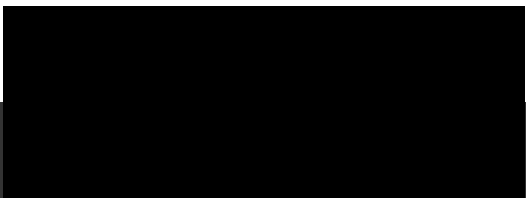
The BOSIET training programme is designed for personnel new to the offshore oil and gas industry.

Delegate Pre-requisites:

A valid medical certificate of fitness
A valid means of identification(e.g International passport,drivers lincense,voters card etc)
One passport photograph

Training Durations:

The optimum 'contact time' for the BOSIET training programme is 21 hours and 5 minutes.





Ship Construction

This unique and exclusive Diploma will develop and deepen your knowledge of the Shipbuilding and Ship Repair sector. With this innovative course, you will gain the essential skills and knowledge required, enabling you to successfully run and manage the building and repair process.

Module subjects include an array of challenging topics such as the docking process, specifications and docking incidents and accidents, alongside other essential subjects such as an introduction to the shipbuilding and ship repair industry, contracts and project management.

COURSE STRUCTURE

The course consists of 12 modules. All students are required to successfully complete and pass the module assignments. Diploma students will also be required to sit and pass a final examination.



Our Services

- Road Construction
 - Tank farm Construction
 - Machine Operator Training
- 



Road Construction

we are offering Premium quality Road Construction Services. Under this, our clients can avail from us Highway Construction and Concrete Road Construction.

When it comes to building roads, we supply all the right equipment to cut, clear, and build roads according to the engineering and client specifications. We can cut, slope, and level the road as required.

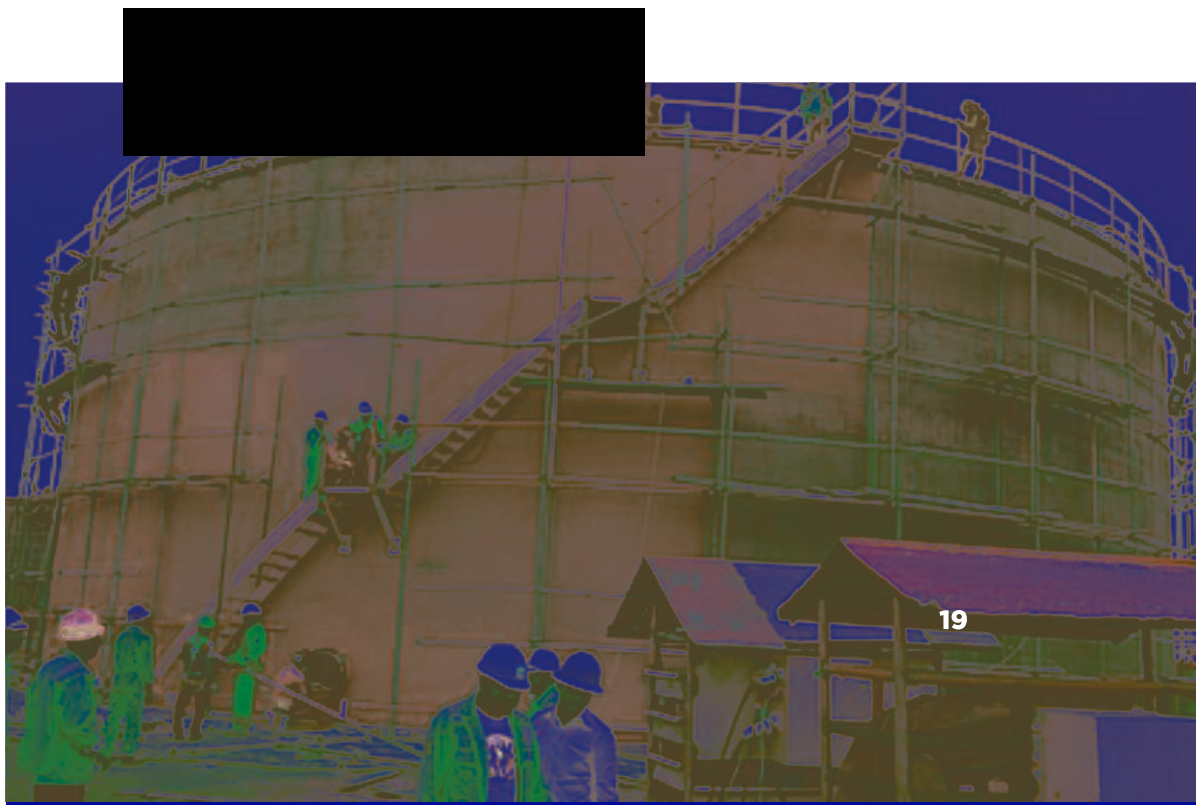
Tank Farm Construction

We offer bespoke tank farm design and construction projects to suit our client's individual needs. Our clients range from large multi-national corporations to family businesses, all of which come to us requiring turnkey process solutions which are delivered on time, on budget and to the expected quality.

All of our tank farm projects follow necessary HSE regulations and each project comes with all relevant Health and Safety documentation.

In addition to turnkey design and construction, Ai Process can provide additional tank farm services including advice and assistance in the repair, modernisation and expansion of existing tanks farms.

Should your company wish to build a tank farm or modify an existing bulk storage facility for non-flammable, flammable and highly flammable solvents and resins, we are your ideal engineering partner.





Machine Operator Training

As part of our services at Lufredha Academy Ltd, we train your drivers/machine operators to utilise every tool for every machine category and model in order to harness the full potential and productivity of your equipment

Our trainers perform machine-specific trainings according to the level of skill your operators have. We employ a combination of instructional design and technology to facilitate effective and actionable learning.

A combination of theoretical and practical training methods within the equipment cabin equips your personnel with the skill to harness the complete power of your investment. The training is also tailored to meet the demands of your job site, so your operators acquire the skills they need within a short time.



Our Policies





COMPANY POLICY

The ultimate responsibility of ensuring the implementation of the company HSE-MS rests directly upon the Managing Director of LUFREDHA Academy Limited.

The Managing Director is wholly committed to ensuring that operations are carried out with regards to all company QHSE rules and regulations and in line with applicable legislation. This is achieved with the Managing Director being ultimately accountable and responsible for the overall implementation of the company's HSE-MS.

The company's HSE Officer/risk control officer must understand their specific responsibilities for Health, Safety and Environmental issues within the organization by ensuring that HSE are part of their key business activity, adequate health and safety of facilities available and that the relevant HSE-requirements and codes of practice are known and adhered to at all times by all the workforce. In their absence they will ensure that these responsibilities are correctly delegated.

Management firmly believes our workers are the most important aspect of the company's operation and as a result of that the prevention of occupational injury or illness and continuous improvement of the HSE-Management System will be considered as a top priority at all times to ensure that each worker goes home safe and healthy. Senior management shall always be personally involve in the implementation of the company's HSE-MS and shall show commitment to HSE principle by participating in the following activities which include but not limited to:



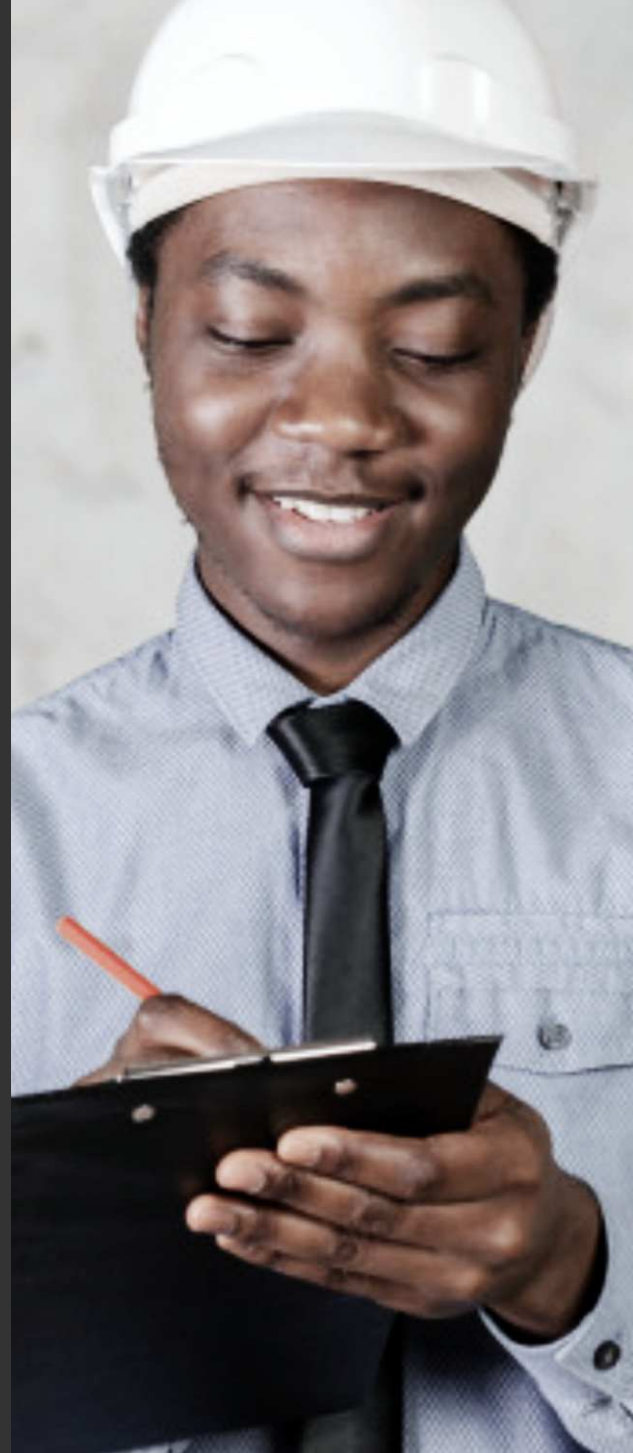
- Audits
- Health and Safety inspection
- Investigations of incidents and accidents
- HSE-Meetings
- Waste Management plan
- Journey Management System audit
- Provision of Safety gadgets and equipment.
- Provision of financial resources to run/enable effective implementation of the company's HSE-MS.
- Regular site Visits.

They shall also promote good HSE culture among the staff by adhering to all HSE legislation and procedures in the company which include but not limited to:

- Adherence to safety rules, regulations and procedures.
- Wearing the required PPE where necessary.

We have various policies that will be communicated to all affected by our operations/interested parties and usually posted conspicuously in all of our company's offices and facilities to increase the level of awareness of personnel at all levels of the organization.

Management will ensure regular/periodic review of her policies to meet relevant changes and for the purpose of continual our Performance.





HEALTH, SAFETY & ENVIRONMENT POLICY

We believe that people and the environment are the most important assets and their safety is our ultimate responsibility. The safety of the people we engage in our operations and the environment are the major consideration in our operations. Every one of our employee, contractor or third party contractor is accountable for conducting her operations in a safe and environmentally friendly manner. In line with stop work authority policy all personnel regardless of its position, have express authority to suspend any operation which in his/her opinion presents a risk to people or the environment.

We are committed to comply with all applicable statutory and regulatory requirements and other relevant standards and codes of practice related to her areas of operations,

The company's top management is committed to maintaining and continually improving a Health, Safety and Environment systems which meets the objectives of this policy,

HSE Policy Objectives

- Provide safe work environments for employees, contractors and visitors.
- Assess risks and strive to eliminate the potential adverse impacts to people and the environment that may result from the Company's

operations.

- Continuously improve the quality of asset procedures which ensure the safety of workers, minimize impacts on the environment and provide for effective emergency response.
- Implement programs to enhance the skills and knowledge of our employees as it relates to health, safety, emergency response and environmental protection.
- Communicate information pertinent to process safety, worker health and safety, and environmental matters to internal and external stakeholders.
- Integrate process safety, worker health and safety, and environmental considerations into business decision-making processes.
- Pursue continuous improvement of the Company's management system for improving process safety, worker health and safety, and environmental performance.
- Conduct annual audits to verify compliance with regulatory requirements, company standards, and accepted industry practices.

Joemarinee's obligations under the provisions of the ISM Code.



GALLERY



BOAT DRIVERS TRAINING AT WARRI, DELTA STATE.



TRAINING IN BAYELSA STATE.



TRAINING IN BAYELSA STATE.



TRAINING IN BAYELSA STATE.



TRAINING IN BAYELSA STATE.



TRAINING IN PORT HARCOURT RIVERS STATE.



TRAINING IN PORT HARCOURT RIVERS STATE.



TRAINING IN PORT HARCOURT RIVERS STATE.





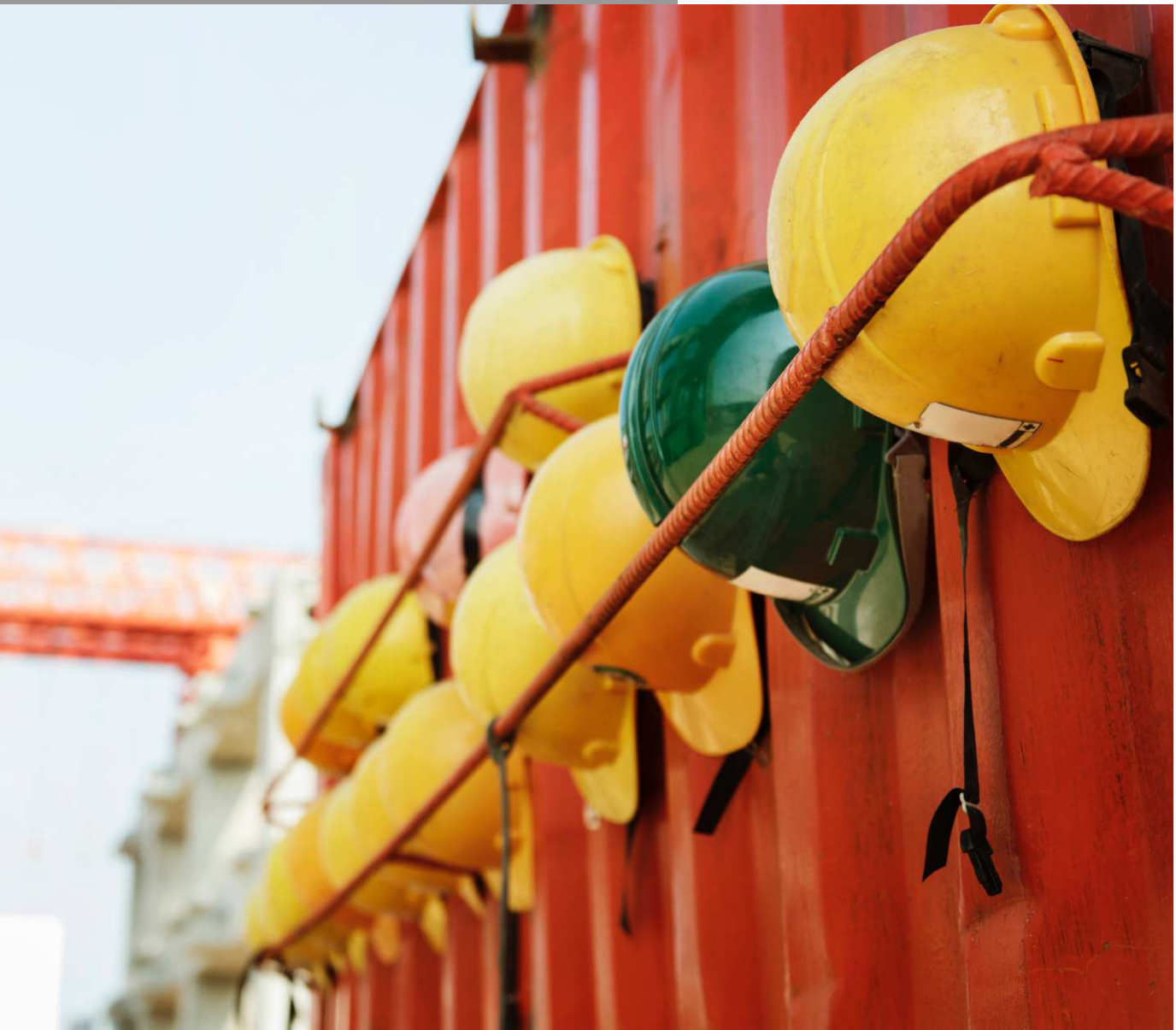
OUR CLIENTS





OUR PARTNERS







Certifications



No. 00000160989

NIGERIA SOCIAL INSURANCE TRUST FUND

ECS CLEARANCE CERTIFICATE

ORIGINAL

Employer Registration No. **1102108221**

This is to Certify that

LUFREDHA ACADEMY LIMITED RC No 1223688

Has complied with the provisions of the Employees' Compensation ACT, 2010 (ECA 2010).

The details of compliance are as follows:

Description	Year..... ²⁰¹⁹	Year..... ²⁰²⁰	Year..... ²⁰²¹
Number of Employees	5	5	5
ECS Contribution Level	PAID	PAID	PAID

This Certificate expires on.....31ST DECEMBER, 2021.....

Official Stamp Impression & Date
01 APR 2021

Ehenge
Approved Signature

RC 1223688



**CORPORATE AFFAIRS COMMISSION
FEDERAL REPUBLIC OF NIGERIA**

Certificate of Incorporation

I hereby certify that

LUFREDHA ACADEMY LIMITED

*is this day incorporated under the COMPANIES AND ALLIED
MATTERS ACT 1990 and that the Company is Limited By
Shares.*

Given under my hand at Abuja this 10th day of November, 2014.



A handwritten signature in black ink, appearing to read "Bello Mahmud", is written above the name of the Registrar.

BELLO MAHMUD
Registrar - General

771726



NATIONAL INLAND WATERWAYS AUTHORITY

Warri Area Office/Dockyard
P.M.B 1019, Deco Junction, Warri-Sapele Road, Delta State.
Email: niwawarridockyard@gmail.com

Ref No. **WAR/616/1/11**

Date: **10th Sept., 2020**

The Managing Director,
Lufredha Academy Ltd.,
Warri,
Delta State.

LETTER OF ENGAGEMENT

In accordance with the provision of the Authority's enabling law Cap N47 LFN 2004 (Part II, Section 9, Article "g"), the Authority after due consideration of your application deemed it fit to engage the service of your Academy as follows:

- i. To collaborate with the Area Office in training Small Powered Driven Craft (SPDC) operators;
- ii. To recommend successful trainees for issuance of certificates, license, etc
- iii. The Authority reserves the sole right to determine the validity of this offer of engagement at any time without any liabilities and obligation whatsoever.

2. Please accept the Authority's esteem regard.

Engr. Dangana M.A.
Area Manager
0806 831 8346



Federal Republic of Nigeria Industrial Training Fund



CERTIFICATE OF COMPLIANCE

This is to certify that LIVRESHA ACADEMY LIMITED
Address NO7 SHAWUKE STREET OFF AGAMUN OAPA EIRUN
Has complied with year 2020 Industrial Training Fund Contribution
in accordance with the Laws of the Federal Republic of Nigeria cap. 19 Laws
of the Federation Section 6 subsections (1), (11), (111) of 2011 as amended

REGISTRATION NO. WAR - 007 - 6705

RECEIPT NO. WU353157

THIS CERTIFICATE EXPIRES 31ST DECEMBER 2021

Arthur Williams
Name and Signature
Head Revenue Inspectorate
& Compliance



Area Office Stamp

ISI BERTI
Name and Signature
Area Manager



PROPOSED SITE FOR LUFREDHA MARITIME ACADEMY



Classroom



Sick-Bay



Fire Fighting Ground





07060924448
lufredhaacademy@gmail.com
No. 7 Shaunche Street, Off Agbamu DDPA
Bendel Estate, Uvwie, Delta state.

